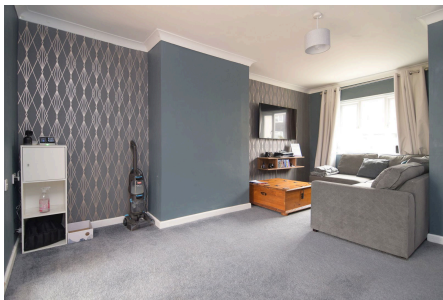




## 28 Metcalf Avenue, King's Lynn PE30 5JT

£175,000

3 1 1



With a fantastic rear garden, a wealth of well presented, bright and airy accommodation and a gas central heating system, this spacious mid terraced house could be the perfect first home or the ideal addition to your property portfolio.



## Key Features

- Mid Terraced House
- Well Presented
- Generous Rear Garden
- Downstairs Cloakroom
- Gas Central Heating
- Three Bedrooms
- Flexible Accommodation
- Conservatory
- 18ft Living/Dining Room
- 16ft Kitchen/Breakfast Room

GROUND FLOOR  
519 sq.ft. (48.2 sq.m.) approx.

1ST FLOOR  
357 sq.ft. (33.2 sq.m.) approx.

